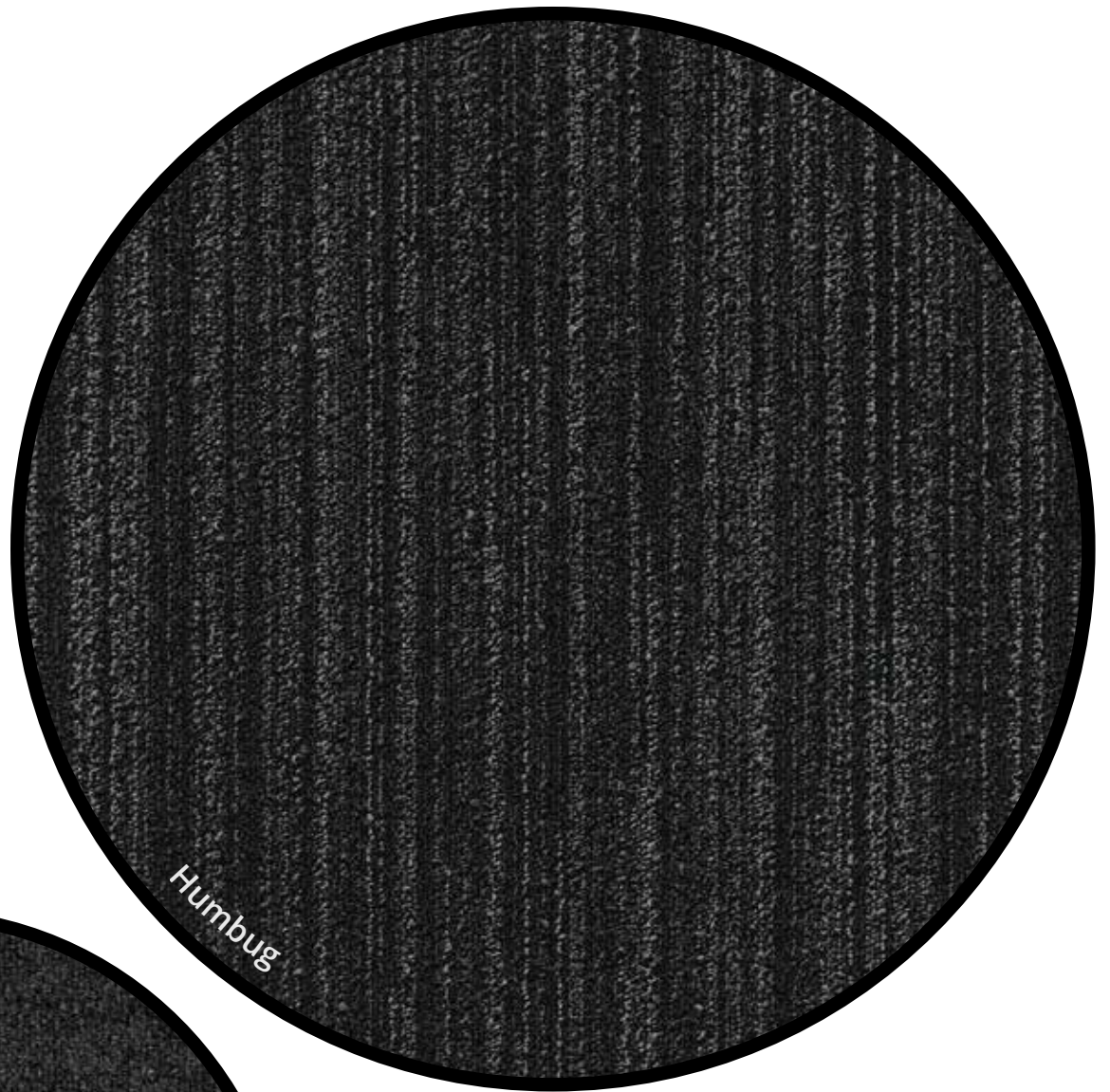
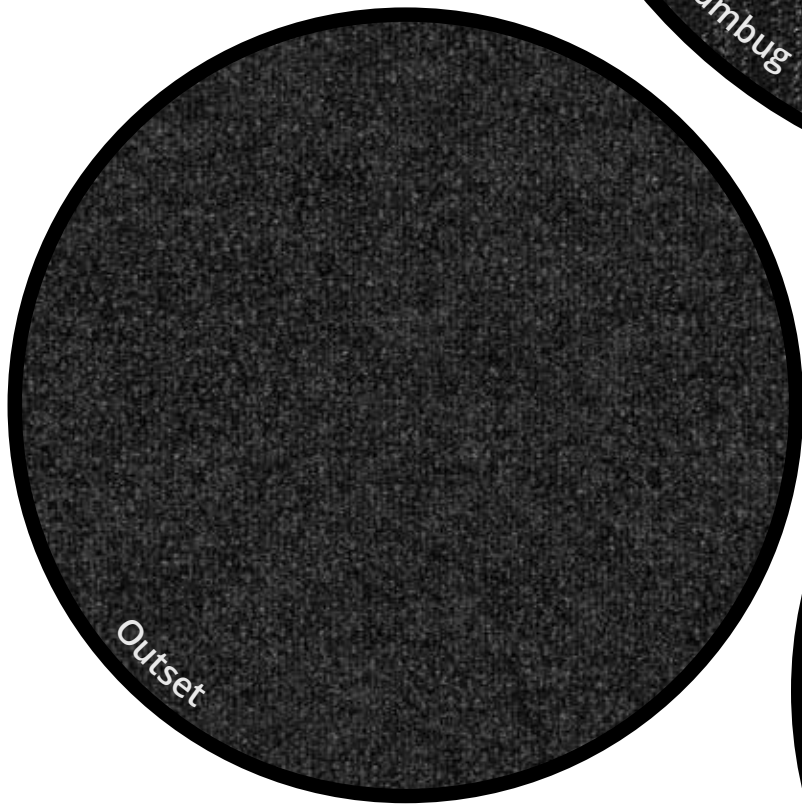




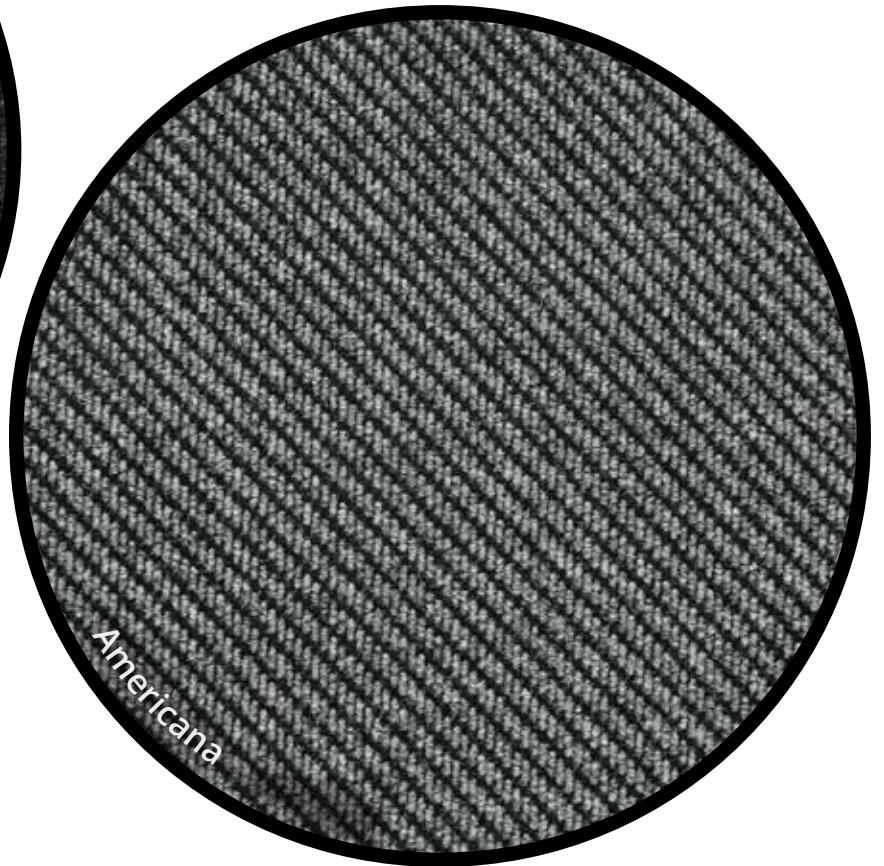
The Place for Commercial Carpet Tiles



Humbug



Outset



Americana

# Entrance Matting

Outset, Americana and Humbug

# Outset



Coal



Marl



Azurite



Shale

# Americana



Memphis



Chicago



Carolina



Buffalo

# Humbug



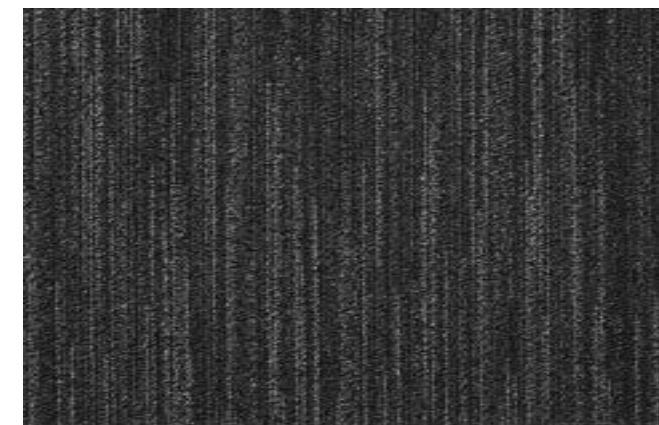
Limestone

LRV 8.0



Clay

LRV 16.0



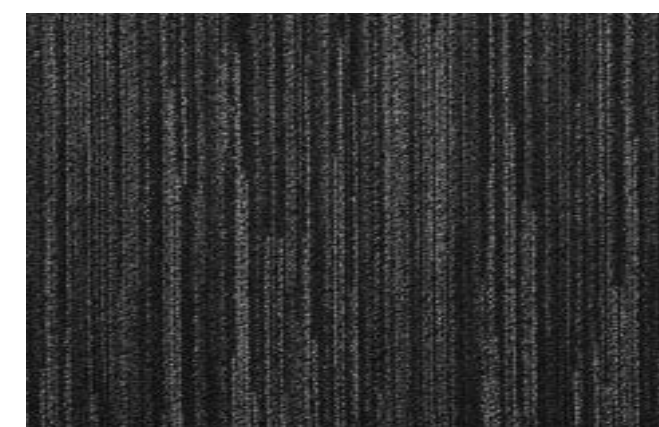
Nickel

LRV 5.0



Iron

LRV 8.0



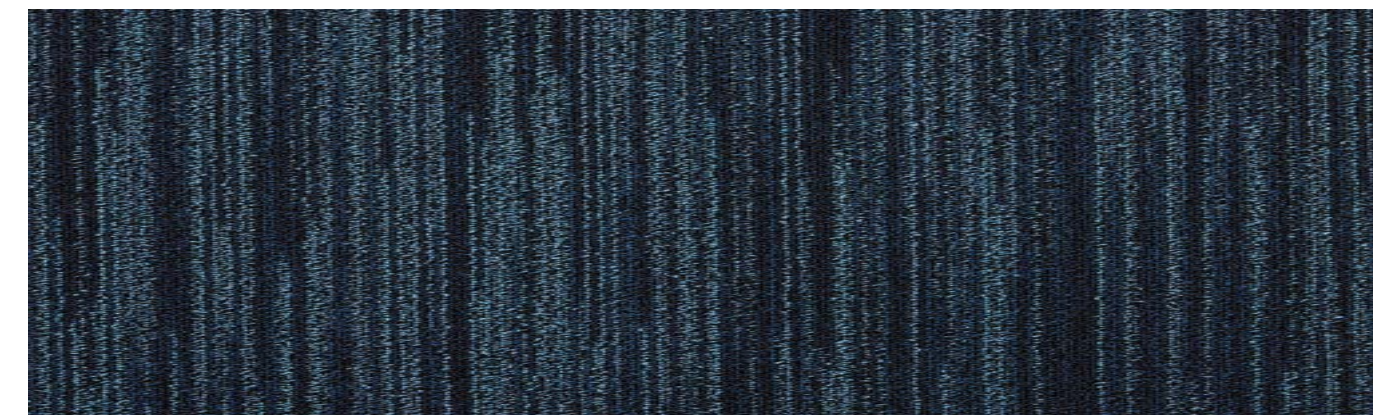
Ebony

LRV 4.0



Bronze

LRV 5.0



Cobalt

LRV 4.0

## General Specification

COMPOSITION		
Primary Backing	ISO2424	Non-woven Polyester
Secondary Backing	ISO2424	Bitumen with glass fibre 3kg/m <sup>2</sup>
CLASSIFICATION		
Flammability (Fire Spread EN13501)	ISO11925	Fs ≤ 150mm within 20 seconds
Flammability (Hot Metal Nut)	BS4790	Low radius effects of ignition
Wear Resistance (Castor Chair Test)	ISO4918	Pass ≥ 2.4 (A – Continuous Use)
Electrical Vertical Resistance	ISO10965	Pass ≤ 10 <sup>9</sup> Ω
Electrostatic Propensity (Stroll Test)	ISO6356	Pass <2.0kV
Slip Resistance	EN13893	DS
Dimensional Stability	EN986	Pass <0.2%
Colour Fastness – Light (CIELAB)	ISO105	≥6-7
Colour Fastness – Rubbing (CIELAB)	ISO105	≥4
Colour Fastness – Water (CIELAB)	ISO105	≥4-5
CERTIFICATION		
WARRANTY		
10 Year Wear Warranty		
INSTALLATION		

## Outset Specification

COMPOSITION		
Construction	ISO2424	Textured Needlefelt
Pile Fibre	ISO2076	100% Polypropylene
Pile Height	ISO1766	3.5 mm ± 0.5mm
Total Height	ISO1765	9.3 mm ± 0.5mm
Pile Weight	ISO1958	920 gr/m <sup>2</sup> ± 5%
Total Weight	ISO8543	5430 gr/m <sup>2</sup> ± 10%
Tile Size	EN994	50 x 50 cm
Tiles per Box		16 tiles per box (4m <sup>2</sup> )
CLASSIFICATION		
Flammability (Radiant Panel EN13501)	ISO9239	C <sub>fl</sub> -S1
Acoustic Impact Noise Reduction	ISO717	24dB
Classification for Use	ISO10874	Class 33 Commercial Heavy
Luxury Class Rating	EN1307	LC1
CERTIFICATION		

## Americana Specification

COMPOSITION		
Construction	ISO2424	Needlefelt
Pile Fibre	ISO2076	100% Polypropylene
Pile Height	ISO1766	4.0 mm ± 0.5mm
Total Height	ISO1765	9.5 mm ± 0.5mm
Pile Weight	ISO1958	1150 gr/m <sup>2</sup> ± 5%
Total Weight	ISO8543	4370 gr/m <sup>2</sup> ± 10%
Tile Size	EN994	50 x 50 cm
Tiles per Box		20 tiles per box (5m <sup>2</sup> )
CLASSIFICATION		
Flammability (Radiant Panel EN13501)	ISO9239	E <sub>fl</sub>
Classification for Use	ISO10874	Class 31 Commercial Moderate
Luxury Class Rating	EN1307	LC2
CERTIFICATION		

## Humbug Specification

COMPOSITION		
Construction	ISO2424	Tufted 1/10th Loop Pile
Pile Fibre	ISO2076	Aqualon 100% PA 6 Nylon
Pile Height	ISO1766	3.6 mm ± 0.5mm
Total Height	ISO1765	7.2 mm ± 0.5mm
Pile Weight	ISO1958	740 gr/m <sup>2</sup> ± 5%
Total Weight	ISO8543	4700 gr/m <sup>2</sup> ± 10%
Pile Density	ISO1763	158,500 tufts/m <sup>2</sup> ± 5%
Tile Size	EN994	50 x 50 cm
Tiles per Box		20 tiles per box (5m <sup>2</sup> )
CLASSIFICATION		
Flammability (Radiant Panel EN13501)	ISO9239	B <sub>fl</sub> -S1
Acoustic Impact Noise Reduction	ISO717	22dB
Sound Absorption	ISO354	500Hz-0.05as, 1000Hz-0.18as, 2000Hz-0.25as, 4000Hz-0.32as
Classification for Use	ISO10874	Class 33 Commercial Heavy
Luxury Class Rating	EN1307	LC2
ENVIRONMENTAL		
BREEAM A Rating		
CERTIFICATION		

© The Floor Hub. Specifications are subject to normal manufacturing tolerances and may be changed without prior notice. Copies of actual test results are available on request.

The Floor Hub HQ, Unit E Ventura Business Park, Colney Street, AL2 2DB

Tel: 01923 211151 Email: hello@thefloorhub.co.uk

www.thefloorhub.co.uk